



TECHNICAL SPECIFICATIONS

**State Theatre
49 Market Street, Sydney**

Current as at October 2019

CONTENTS

Contact Sheet	2
Seating Capacity	3
Front of House Information	3
Disabled Access	3
Box Office	3
Audience Recall System	3
Showcase and Banner Info	4
Seating Plan	5
Stage Plan	6
Stage Specifications	7
Lighting Positions	8
Power Supply	9
Fly System	9
Fly Line Plot	10
Standard Theatre Equipment (inclusive in venue hire)	12
Equipment Hire (lighting, audio, orchestra, risers, cinema)	13
Dressing Rooms	19
Wardrobe	23
Kitchen & Green Room	24
Loading In and Out	25

CONTACT SHEET

Administration

General Manager	Mark Harris	+61 2 9373 6853
Office Manager	Maddison Honeyman	+61 2 9373 6852
Administration Fax		+61 2 9373 6537

Theatre

Theatre Manager	Jillian Belfield	+61 2 9373 6864
Front of House Manager	Beaver Garland	+61 2 9373 6847
Theatre Fax		+61 2 9373 6538
Food & Beverage Supervisor	Stuart Greene	+61 2 9373 6862
Maintenance Manager	Zulfikri Shahrani	+61 2 9373 6892
Box Office		+61 2 9367 3234
Box Office Fax		+61 2 9267 2329
Stage door		+61 2 9373 6872

Technical Contacts

Production Manager	Scott Milander	+61 2 9373 6839
	scott_milander@statetheatre.com.au	

Production Coordinator	Clark O'Neill	+61 2 9373 6506
	clark_oneill@statetheatre.com.au	

E Mail Address

admin@statetheatre.com.au

Website

www.statetheatre.com.au

Mailing Address

State Theatre
GPO Box 1609
Sydney NSW 2000

Street Address

49 Market Street
Sydney NSW 2000
(between George St and Pitt St)

The State Theatre is owned and operated by The Greater Union Organisation Pty Limited Australia.

ABN 79 003867918, 49 Market Street, Sydney, NSW, 2000.

Seating Capacity

Capacity	2,034 seats
Stalls	828 seats
Mezzanine Lounge	426 seats
Dress Circle	780 seats (Front Section A-J 470 seats) (Upper Section K-P 310 seats)
<u>Standard Seat Withdrawals</u>	
Sound and lighting desk positions:	Stalls Row V17–29 Stalls Row W17-29
Followspot positions (centre)	Dress Circle P27-32 + O25
Owners Seats	Stalls G30-39, Mezzanine B24-27

Standard Saleable capacity 1991 seats

IMPORTANT INFORMATION

Having treads from the stage to the auditorium requires certain seats to be taken out. Tread use and their configurations must be consulted and confirmed with the Operations Department **prior** to the seats going on sale. Please see the below tread configuration options and corresponding seat kills.

Single centre treads: A29, A30.

Double centre treads: A28, 29, 30, 31.

Side treads: Prompt: A19, 20, 21, 22. Opposite prompt: A37, 38, 39, 40.

Front of House Information

Merchandise counter & display facilities - Grand Assembly
Five licensed bars
Candy bar
Public amenities on all levels

Disabled Access

Level surface from street level to Mezzanine Foyer, 3-step ramp into auditorium

Box Office

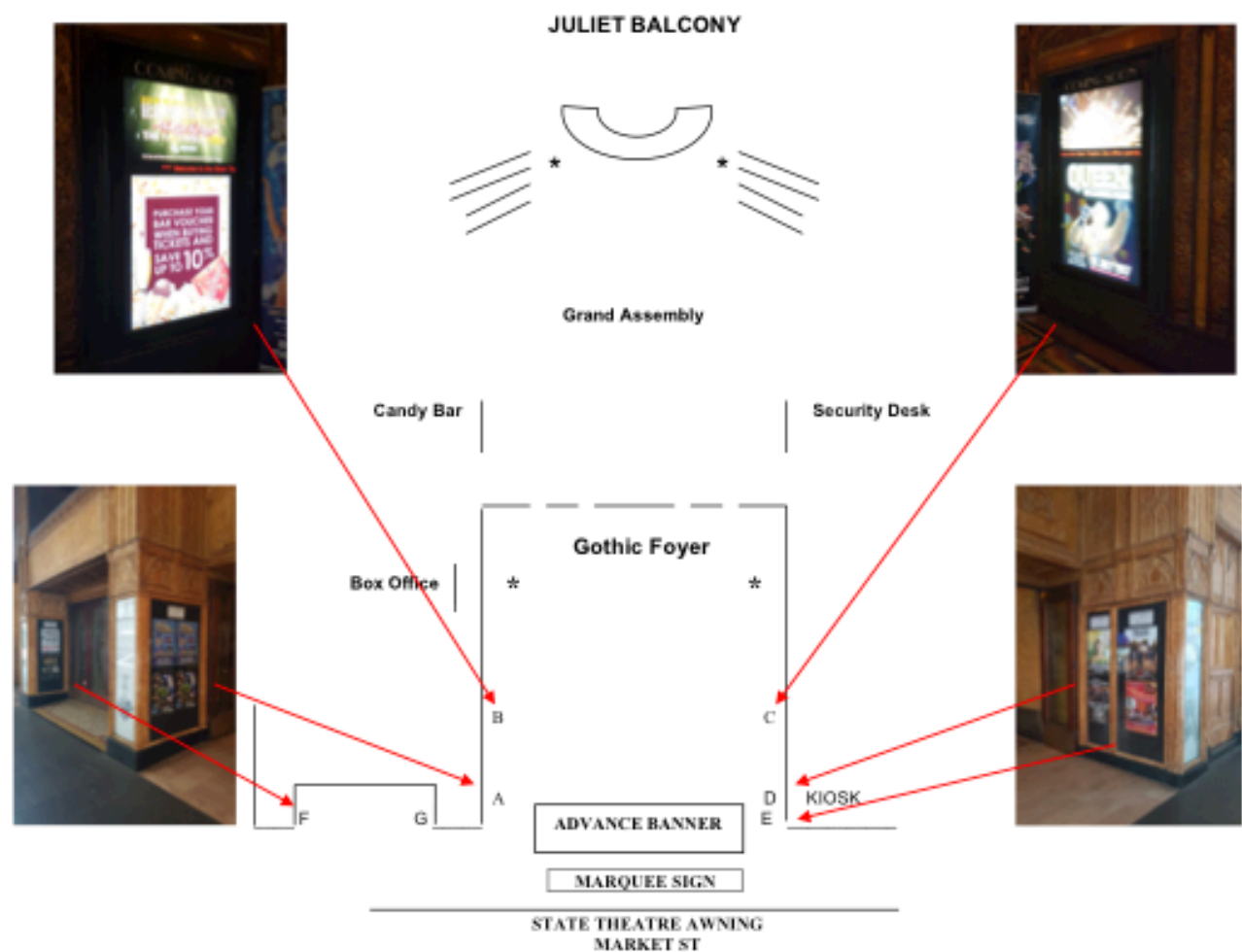
All ticketing is administered through The State Theatre Box Office using the computerised ticketing service of Ticketmaster (Australia) www.ticketmaster.com.au

Audience Recall System

Manually operated chime controlled by Front of House staff

FOYER PLAN

SHOWCASE AND BANNER MEASUREMENTS



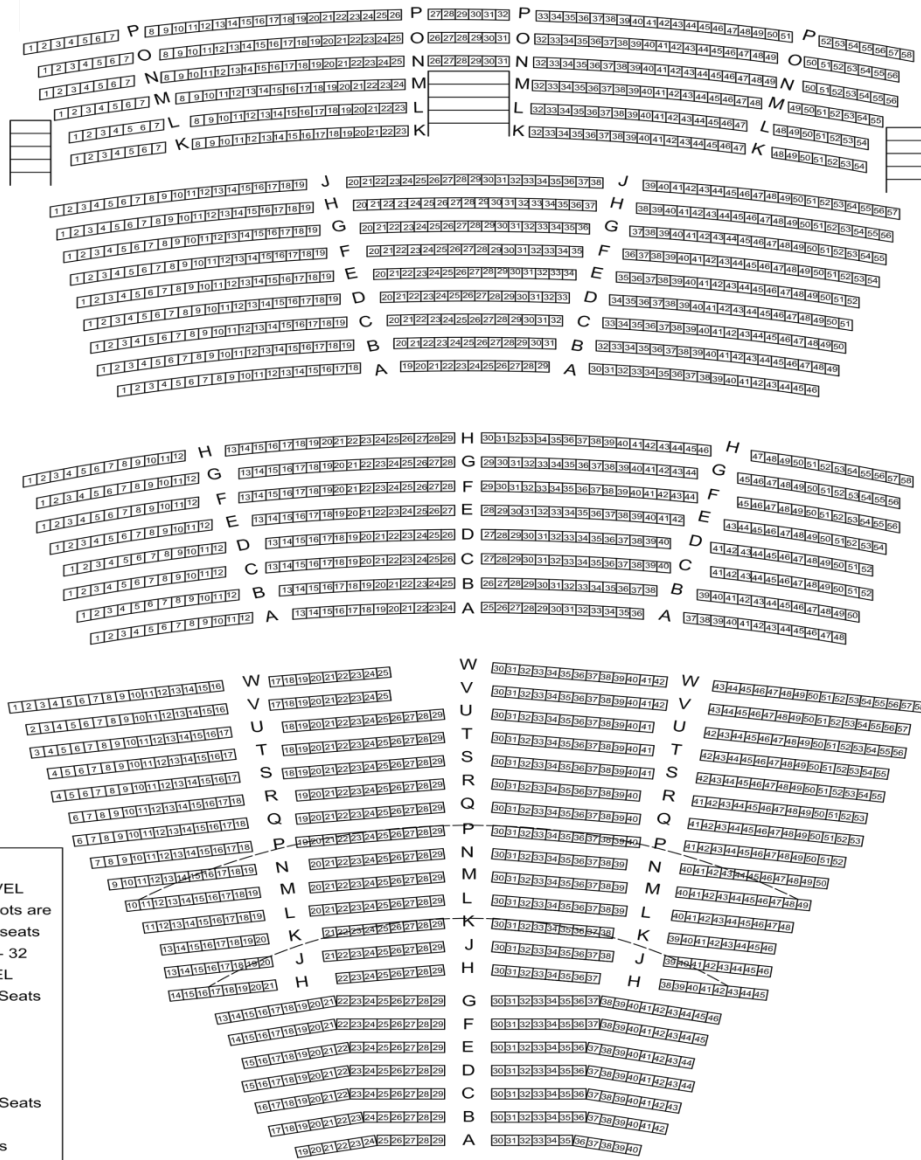
Showcase Sizes

- A. W 990mm H 1730mm
- B. Digital Screen
- C. Digital Screen
- D. W 400mm H 1720mm
- E. W 640mm H 1720mm
- F. W 620mm H 1720mm
- G. W 630mm H 1740mm

Other Positions

- Advance & Marquee Banner
- W 3150mm H 915mm
- Awning - Market Street
- W 27000mm H 1100mm
- Juliet Balcony – GA
- W 3300mm H 850mm
- Showcase – George Street
- W 415mm H 1770mm

SEATING PLAN



dress circle
rear section
capacity 310

capacity 470

mezzanine
capacity 426

stalls

rear section
capacity 628

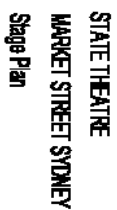
front section
capacity 200

seating capacity
2,034

Legend
DRESS CIRCLE LEVEL
If more than 2 follow spots are required the following seats are unavailable P27 - 32
MEZZANINE LEVEL
State Theatre Owner Seats
B24 - 27
Disabled seating
H13 - 29
STALLS LEVEL
State Theatre Owner Seats
G30 - 39
Sound Mixer Seats
W17 - 29, V17 - 29

STAGE

Other stage plans



Available upon request in both PDF and DWG versions. Please contact State Theatre Technical Manager for more information.

STAGE SPECIFICATIONS

Stage Dimensions

Proscenium Opening

Width	11300 mm
Height to bottom of Fire Curtain	8300 mm
Height to bottom of House Curtain	7700 mm

Depth

From Back Wall to Setting Line	11600 mm
From last line set to Setting Line	9500 mm
From Setting Line to D.S. edge of Apron	4800 mm

Stage Height

From Auditorium floor	1100 mm
-----------------------	---------

Grid

Timber joists on steel	
Underside to stage surface	17000 mm

Fire Curtain

Steel Drop directly upstage of Proscenium

Must remain unobstructed at all times

Stage Floor

Surface	Double layer plywood on wooden rafters, flat black
Stage Rake	Less than 1° (rise of 200 mm over 16400 mm)

LIGHTING POSITIONS

Dress Circle Rail

Throw to curtain setting line at centre stage	17500 mm
Vertical angle	Minimum 24°
30 Circuits - 10 amps each terminating in the dimmer area (1 level down – P.S.) Access for focus from front row Dress Circle	

Dress Circle Box Boom # 1 (At Juliet Balconies)

Throw to curtain setting line at centre stage	18000 mm
Vertical angle	Min 24°, Max 40°
10 Circuits O.P.	
10 Circuits P.S. - 10 amps each terminating in the dimmer area (1 level down – P.S.)	
Access for focus from straight ladder	

Dress Circle Box Boom # 2 (Opposite Row Dress Circle)

Throw to curtain setting line at centre stage	23000 mm
Vertical angle	Min 35°, Max 40°
10 Circuits O.P.	
10 Circuits P.S. - 10 amps each terminating in the dimmer area (1 level down – P.S.)	
Access for focus from straight ladder	

Truss # 1

Throw to curtain setting line at centre stage	8000 mm
Down stage of curtain setting line	2500 mm
2 x hanging points from centre line of stage	5500 mm

Truss # 2

Throw to curtain setting line at centre stage	10500 mm
Down stage of curtain setting line	5500 mm
2 x hanging points from centre line of stage	6300 mm

Trusses must be masked with black fireproofed material i.e. wool/velvet/velour

Follow Spot Positions

2 x Platforms back row of Dress Circle	
Throw to curtain setting line at centre stage	35000 mm
Power outlet on Platform 5 pin WILCO 32 amp 3 Phase	
Single DMX line to Prompt corner	
3 x comms lines to Prompt corner	

Lighting Desk Position

Back row of Stalls	Row V17 - 29 and W17-29
Area of above	2400 mm x 6200 mm
Control cable length from desk to racks	60000 mm
Distance of desk position to curtain setting line	28500 mm
4 x DMX lines to Prompt corner	
2 x comms lines to Prompt Corner	

POWER SUPPLY

Up Stage Prompt Side

Lighting – 400 Amp Powerlock. Tails 2m minimum.

Audio – 150 Amp Powerlock. Tails 2m minimum.

2 x 32 amp 3-Phase Wilco outlets, 1 x 55 amp 3-Phase Wilco outlet

Down Stage Opposite Prompt

1 x 32 amp 3-Phase Wilco outlet

1 x 10 Amp GPO

Foyer

Various 10 Amp GPO's are located around all the foyers and passageways

Empire Builders Room

1 x 32 amp 3-Phase

3 Phase extension lead with 6 outlet distribution board

Outside Empire Builders Room

2 x 15 amp

Dress Circle Foyer

2 x 32 amp 3-phase located in cupboard near dress circle bar

Green Room

1 x 32 amp 3-Phase with 6 outlet distribution board

FLY SYSTEM

47 line sets

Lines 1 – 34 (Prompt Side) Single purchase counterweight system.

Lines 35 – 47 (Opposite Prompt) Double purchase counterweight system.

All lines complete with brake

All lines 48 mm O.D. steel pipe

Barrel travel = 1,500mm

Lines 1-34 (Prompt Side)

Operated above stage level

Maximum length of barrel - (downstage)

12000 mm

Minimum length of barrel - (upstage)

8500 mm

Maximum cradle capacity

180kgs (including bar weight)

Lines 35-47 (Opposite Prompt)

Operated above stage level

Maximum length of barrel - (downstage)

8000 mm

Minimum length of barrel - (upstage)

6500 mm

Maximum cradle capacity

150kgs (including bar weight)

FLY LINE PLOT

Bar	Note	From Front of Apron (mm)	Centre to OP	Centre to PS
Fire Curtain		5,000		
1	House Curtain	5,150		
2		5,500	5,940	6,050
3		5,700	5,910	6,080
4	Cinema Masking	5,800		
5	Cinema Screen	6,000		
6		6,400	5,815	6,290
7		6,550	5,880	5,980
8		6,700	5,840	6,470
9		6,850	5,780	6,420
10		7,000	5,690	6,530
11		7,150	5,330	6,680
12		7,450	5,300	6,770
13		7,600	5,520	6,900
14		7,950	4,940	7,070
15		8,100	5,120	6,340
16		8,250	4,790	7,230
17		8,300	4,924	7,085
18		8,450	4,920	7,195
19		8,600	4,870	7,185
20		8,750	4,695	7,105
21		9,050	4,680	6,488
22		9,200	4,550	7,525
23	Unavailable – LX Truss	9,650	4,240	7,195
24	Unavailable – LX Truss	9,850	4,260	7,525
25		10,000	4,180	7,405
26		10,100	4,150	7,055
27		10,250	4,100	7,000
28		10,400	4,000	6,930
29		10,550	3,800	6,800
30		10,700	3,650	6,630

Bar	Note	From Front of Apron (mm)	Centre to OP	Centre to PS
31		10,550	3,550	6,400
32		10,350	3,500	6,300
33		11,150	3,450	6,130
34		11,300	3,200	6,030
35		11,650	3,600	6,505
36		11,800	3,000	6,400
37		11,950	2,935	6,250
38		12,100	2,820	5,950
39		12,250	2,800	5,950
40		12,400	2,925	5,990
41		12,550	3,200	5,240
42		12,700	3,180	5,260
43		12,850	3,000	5,300
44		13,000	2,900	5,390
45		13,150	2,890	4,000
46		13,300	2,890	3,550
47		13,450	2,900	3,110

STANDARD THEATRE EQUIPMENT (inclusive in Venue Hire)

Soft Goods

QTY	DESCRIPTION	SIZE (mm)
1	House Curtain (Red with gold fringe, Guillotine Action – operated from PS fly floor)	
1	Flat Wool Border	2,800 x 14,500
3	Pleated Wool Border	2,000 x 11,000
1	Flat Wool Truss Border	900 x 17,000
1	Flat Wool Truss Border	950 x 12,000
1	Flat Wool Border	4,200 x 12,200
4	Pleated Wool Leg	9,000 x 2,000
6	Pleated Wool Leg	9,000 x 3,000
2	Pleated Wool Leg	4,200 x 12,200
1	Black Tab	9,500 x 9,200
1	Flat Wool Drop	9,000 x 12,000
1	White Cyclorama	10,000 x 9000
1	Black Sharkstooth	11,000 x 9,000
1	Projection Screen (matt white perforated)	12,000 x 6,000

Mechanical Equipment

1 x Genie Aerial Work Platform (Maximum Height 11m)

*Please note the EWP is charged only if used and is exclusive of venue hire.

EQUIPMENT HIRE (exclusive of venue hire)

Below is a range of standard equipment available for hire from the theatre. Prices available upon request.

Additional sound, lighting, vision and staging equipment can also be supplied – please contact the technical department for more information.

AUDIO

FOH Speaker System

22 L-Acoustics dV-DOSC Enclosure

8 L-Acoustics dV-SUB Sublow Enclosure

FOH Speakers - Subs & Infill

2 L-Acoustics 108P Powered Enclosure

2 L-Acoustics 115XT HI-Q Enclosure

4 L-Acoustics SB218 Sublow Enclosure

FOH Speakers - Rigging

1 L-Acoustics dV-Rigging Assorted

6 L-Acoustics MAN18 Shackle

2 L-Acoustics dV-BUMP2, Fly & Stacking Bar for dV-Dosc/ dV-SUB

2 L-Acoustics dV-BUMP(HD),Flybar for dV-DOSC

2 Tape Measure, 30m

FOH Amps

2 Amplifier Rack, State Theatre (4xLA8)

1 Whirlwind Patch Panel, 2x W1 - 12x Female + 12x Male XLR (PA Drive)

1 Whirlwind Patch Panel, 1x W1 - 12x Male XLR (PA Drive)

FOH Speakers - Drive

1 Electronics Rack, 21ru (FS)

1 Norco 1ru 15.6" LCD Monitor + Keyboard, 8 port KVM

1 Apple Mac Mini Computer

1 Apple Mini Displayport to VGA Adapter

1 Sonnet RackMac Mini (Mac Mini Rack Tray)

1 Tascam CDRW901SL CD Recorder

1 BSS FCS-960 2ch Graphic Equaliser

2 BSS FDS-366 Omnidrive Plus Processor

1 Klark Teknik SQ1 2ch Graphic Equaliser

1 Rack Drawer, 3ru

1 Whirlwind Patch Panel, 2x W1 - 12x Female + 12x Male XLR

1 Whirlwind W1 12ch Header, 7m (Female XLR)

FOH Control

1 Yamaha DM1000 Digital Console

Monitor Control

1 Jands TBM 2ch Master Station

Radio Microphones

- 1 Shure UR4D-J5E 2ch Receiver
- 2 Shure UR2-J5E Handheld Transmitter
- 2 Shure U2/UR2 Beta58A Mic Capsule
- 2 Shure HandHeld Mic Clip WA371
- 2 Shure UA830WB Antenna Booster
- 3 Shure UA820J Dipole Half Wave Antenna
- 2 BNC Antenna Cable RG8-X, 7.6m
- 1 BNC Antenna Cable RG8-X, 15.2m

Microphones

- 1 Mic Accessories Drawers case (State Theatre)
- 4 Shure SM81 Condenser Mic
- 12 Shure SM57 Dynamic Mic
- 6 Shure Beta58A Dynamic Mic
- 1 Beyer M88 Dynamic Mic
- 2 Sennheiser MD-421 Dynamic Mic
- 6 Klark Teknik DN100 Active DI
- 2 Shure 12A Dynamic Switch Mic
- 6 JPS Patch Cable DI 1/4" Jack
- Monitor Speaker System
- 8 Clair 12AM Monitor Speaker Enclosure
- 4 Clair 12AM Roadcase
- 1 Amplifier Rack, 4mix 12AM (Crest)

Sound Equipment

- 1 FOH/Monitor Accessories Case (State Theatre)
- 1 Cables Case, Mic/Power/Mon (State Theatre)
- 1 Multi - Mic Stands Case (State Theatre)

Multicores

- 1 L-Acoustics dV-DOSC Drive Multicore Case (State Theatre)
- 1 Multicore Case, Burndy 60ch Input 100m (State Theatre)

Power

- 1 Power Distribution Rack, 128Amp (4x40Amp Wilco)
- 1 Power Distribution Rack, 40Amp Wilco (House)
- 2 Wilco 3phase Cable, 25m PA
- 1 Power Distribution Rack, 63Amp, Ceeform (Monitor III)
- 1 Ceeform 3phase 32Amp (Male) to Wilco (Female) Adapter
- 2 Wilco 3phase 32Amp (Male) to Ceeform 63Amp (Female) Adapter 15m
- 1 PDS-6, 63Amp Ceeform to 6 x 20Amp GPO

Rigging

- 2 Lodestar 1/2ton Chain Motor 60'
- 1 Chain Motor Case, 2 x 1/2Ton
- 2 Weiland Chain Motor Cable, 30m
- House Coms System
- 1 Jands Ezicom 4ch Master Station
- 9 Clearcom RS501 1ch Beltpack
- 10 Beyer DT-109 Dual Muff Headset (Beige)

Live Multi-Track Recording Service (exclusive of venue hire)

The State Theatre is one of Sydney's premier acoustic spaces and lends itself well to live recording.

The State Theatre is now able to offer a multi-track recording service.

Services include:

Option 1

Multi-track record – wave files.

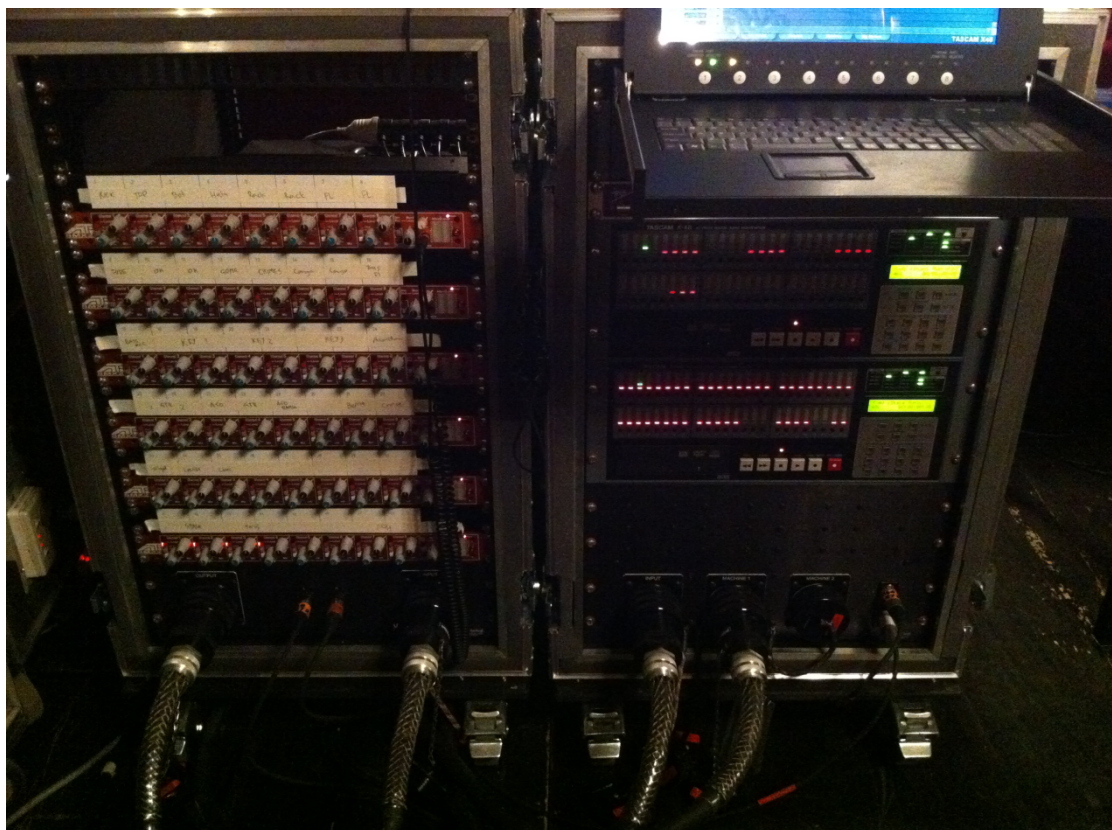
Option 2

Multi-track record – wave files, plus a full re-mixed and mastered C.D

Record system consists of:

48 x Channels of ATI preamps.

2 x Tascam 48 hi-definition multi-track recorders



LIGHTING (exclusive of venue hire)

QTY	EQUIPMENT	NOTES
RIGGING		
	Front Truss	
1	Box 18" 40'	4 x 3m truss pieces
2	Chain Motor	1 tonne
1	Motor Control	
1	Truss Border	13m x 600mm black wool
1	Safety Kit	Inertia reel & safety line
	Associated Rigging	All slings, shackles etc to suit
	Rear Truss	
1	Box 18" 32'	4 x 2.5m truss pieces
2	Chain Motor	1 tonne
1	Motor Control	Shared with front truss
1	Safety Kit	Inertia reel & safety line
	Associated Rigging	All slings, shackles etc to suit
	Other Rigging	
6	2m Steel Pipe	Black
6	Boom Base	On lockable castors
24	Boom Arms	
10	H Stands	Black
LIGHTING		
6	ETC S4 Profile 10 deg	750W
12	ETC S4 Profile 26 deg	750W
12	ETC S4 Profile 36 deg	750W
20	ETC S4 Zoom 15-30 deg	750W
22	Selecon Fresnel	1200W + BDR's

40	Parcan 64 MFL in bars of 4	240V
40	Parcan 64 NSP in bars of 4	240V
8	S4 Iris	
12	S4 Gobo Holder	
	Automated/LED	
8	MAC Viper	
14	MAC Aura LED Wash	
16	LED Quad Pars	Black
	Effects	
8	Sun Strips	
8	Molefay Duets	
2	Unique 2 Hazer	
	Followspot	
2	RJ Victor	1800W
	Control	
1	GrandMA	
2	48 Way HP12 Jands dimmer	
1	24 Way HP12 Jands dimmer	
2	PDS 12 Way GPO Jands distro	
3	DMX 8 Way splitter	
1	Power lock wire in tails	
1	Power lock extension	25m

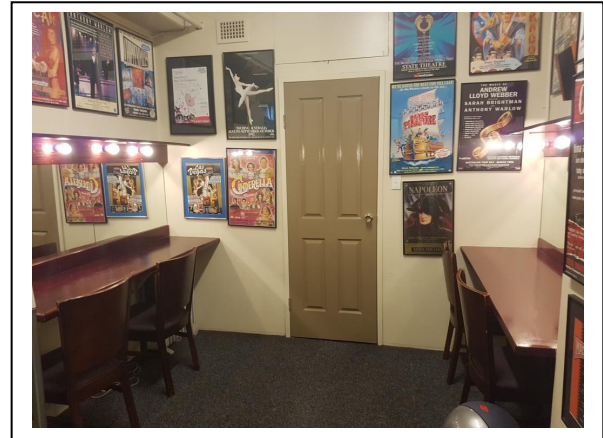
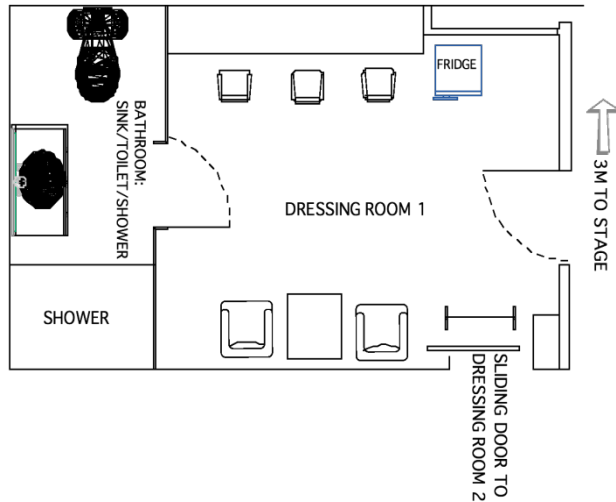
OTHER

QTY	EQUIPMENT	NOTES
ORCHESTRAL EQUIPMENT		
25	Music stands - black	Adjustable
	Chairs/stools	Various sizes and types
RISERS		
7	Megadeck Risers – full deck	1,200 x 2,400mm, black velvet skirt
2	Megadeck Risers – half deck	1,200 x 1,200mm, black velvet skirt
	Stage infill sections	Enables a flat DS edge for thrust
CINEMA		
1	Barco DCP 2K-23B (3D Capable)	Doremi DCP-2000
2	Cinematica Victoria 8	5kw Zenon 35mm/70mm
2	Bauer 2.5kw Zenon	16mm - one with Double Head facility
	Dolby 6-track digital surround sound system	On all levels of auditorium

DRESSING ROOMS

Connected by Stairs on P.S.

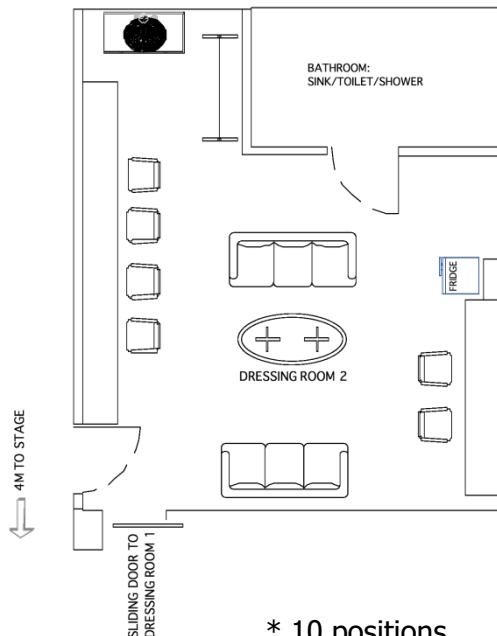
Dressing Room # 1 (Stage Level)



- * 3 Positions
- * Approximate area 3500 mm x 3000 mm
- * 1 sink, 1 toilet and 1 shower

- * Nearest dressing room to stage
- * Paging System

Dressing Room # 2 (Stage Level)

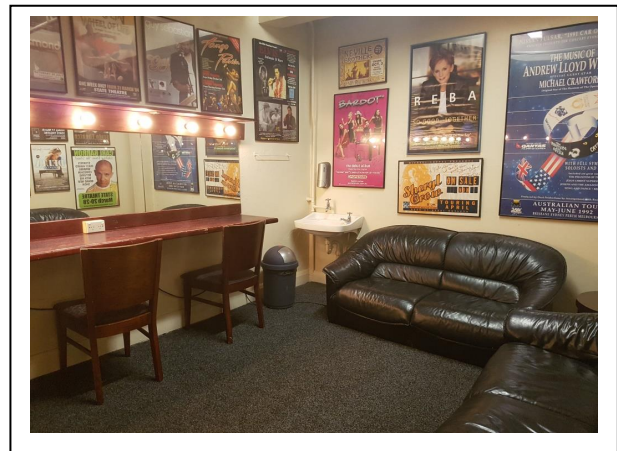
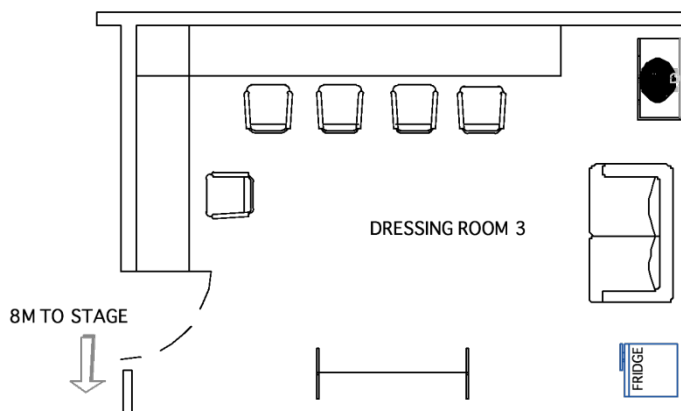


- * 10 positions
- * Approximate area 6000 mm x 5000 mm
- * 1 sink, 1 toilet and 1 shower

- * Same level as

- * Paging System

Dressing Room # 3 (Stage Level)

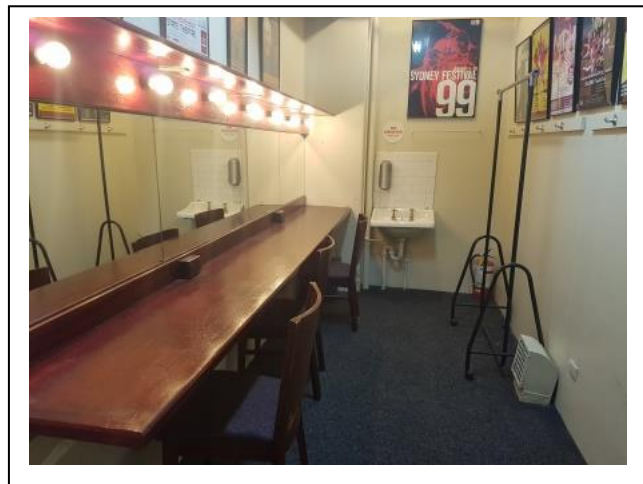
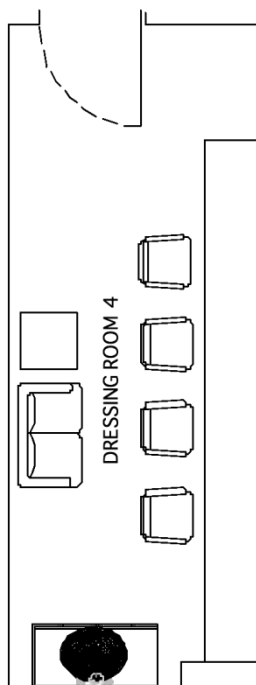


- * 4 positions
- * Approximate area 3300 mm x 4500 mm
- * 1 sink

- * Same level as stage
- * Paging system

Dressing Room # 4 (1 level above Stage Level)

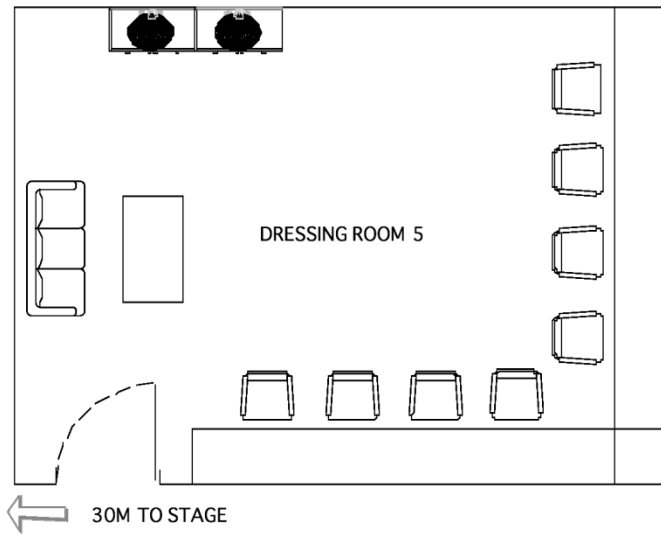
← 30M TO STAGE



- * 4 positions
- * Approximate area 2000 mm x 6000 mm
- * 1 sink

- * 1 level above stage
- * Paging System

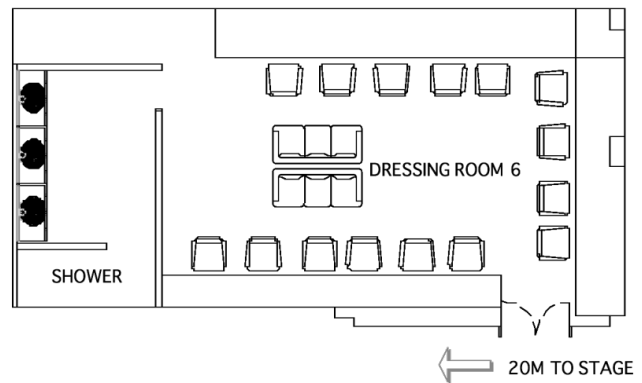
Dressing Room # 5 (1 level above Stage Level)



- * 5 positions
- * Approximate area 3400 mm x 4500 mm
- * 2 sinks

- * One level above stage
- * Paging System

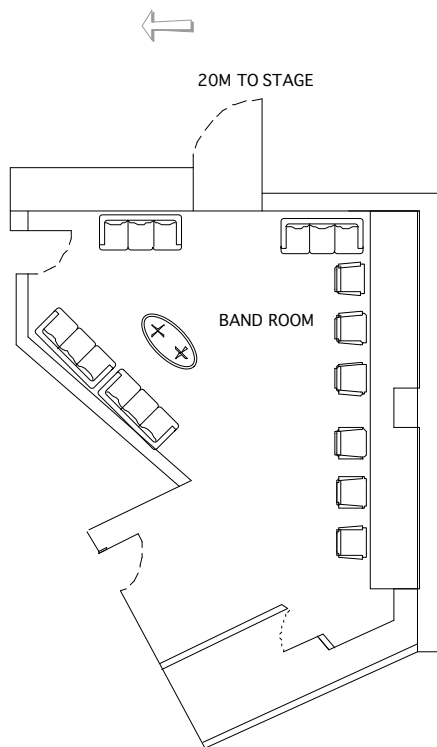
Dressing Room # 6 (1 level below Stage Level)



- * 20 positions
- * Approximate area 10000 mm x 5000 mm
- * 3 sinks, 1 shower

- * One level below stage
- * Paging System

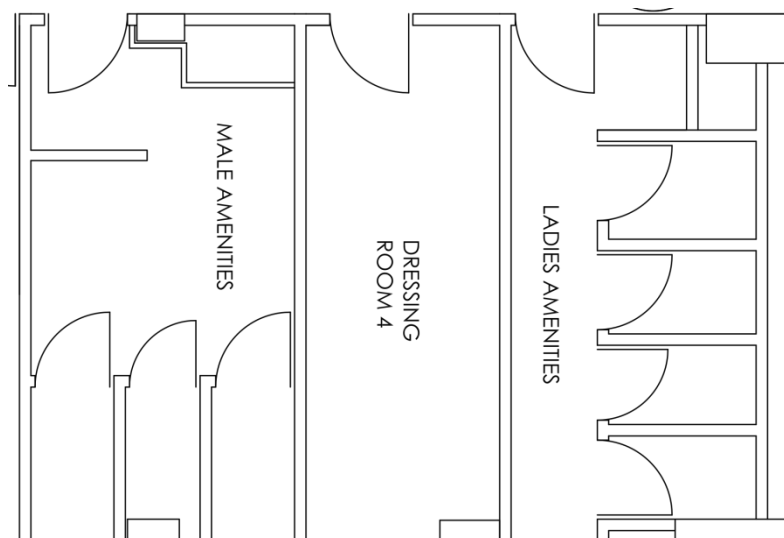
Band Room (1 level Below Stage)



- * No mirrors on benches
- * Approximate area 2500 mm x 3200 mm

- * One level below stage
- * Paging System

Toilets (1 level above Stage Level)



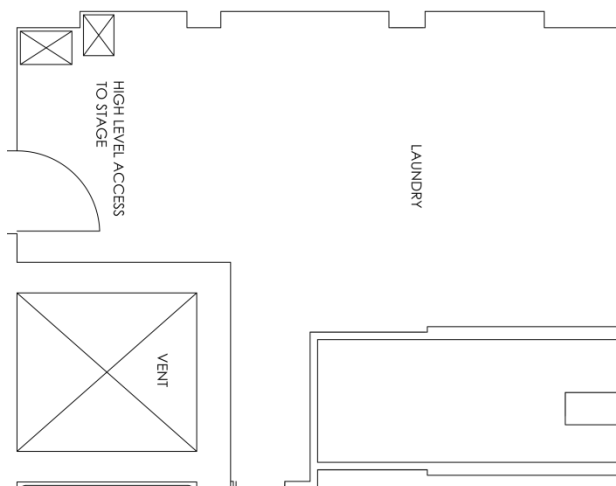
Gents Toilets

- * 2 toilets
- * 2 urinals
- * 2 sinks
- * 1 shower
- * Paging System

Ladies Toilets

- * 3 toilets
- * 1 sink
- * 1 shower
- * Paging System

Wardrobe (1 level above Stage Level)



- * One level above stage
- * Includes wig dressing area mirrors and lights



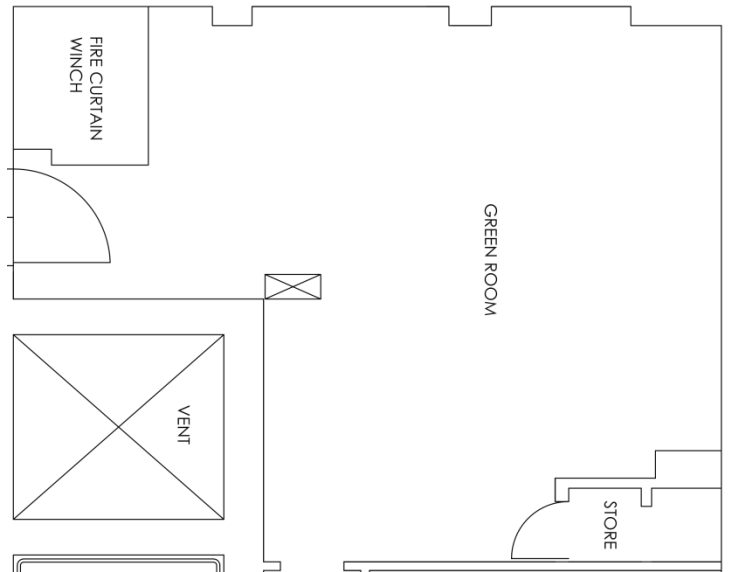
Equipment Included in Hire

- 2 x Maytag Commercial Dryers
- 1 x Maytag Commercial Washing Machine
- 1 x Fisher & Paykel Top Loader Washing Machine
- 5 x Costume Racks
- 3 x Ironing Boards with Iron
- 1 x Steamer
- 1 x Stainless steel laundry tub
- 1 x Cutting/work table (1200 x 3000mm)
- Paging system

Power

- 2 x 15 amp outlets Single Phase
- 4 x 10 amp outlets Single Phase

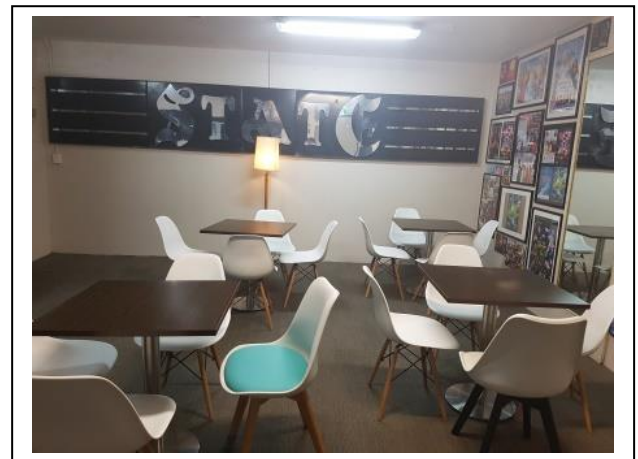
Kitchen



- * Stainless steel workbenches/shelves
- * 2 x Large Fridges
- * 1 x Ice Machine
- * 1 x Sink

- * Tables/Chairs as required
- * Paging System

Green Room



LOADING IN AND OUT

Market St Loading Zone



Option 1: Vehicles less than 3.1m are to enter Parlour Lane off Market St front end first, turn around once inside the dock and exit front end first. This is a shared loading dock, therefore all deliveries and pickups must be booked through the theatre 24hrs prior to arrival. Drivers are to call their onsite contact 10 min prior to arrival. This is a load and unload area **only**, there is no onsite parking available.

Option 2: Vehicles higher than 3.1m must unload from in front of the theatre on

Market St. All equipment is then to be transported to the loading dock via Parlour Lane.

*PLEASE NOTE

- Market St unload (option 2) can **ONLY** be accessed between hours of **10pm and 6am**
- Safety and security personnel are provided by the State Theatre.
- Gowings Lane opening (from Market St) = **3350mm wide x 3100mm high**

IMPORTANT NOTE: THE LOADING DOCK AND THE PARLOUR LANE ARE USED AS FIRE AND SAFETY EGRESS WHEN THERE ARE PATRONS INSIDE THE STATE THEATRE. AT THESE TIMES THE LOADING DOCK AND THE GOWINGS LANE MUST BE KEPT CLEAR OF ALL VEHICLES UNLESS AUTHORIZED BY STATE THEATRE MANAGEMENT.

Goods Hoist (lowering equipment from street level to stage)

REQUIRES 2 X CREW FOR ANY OPERATION – STRICTLY VENUE PERSONNEL ONLY



Width	870mm
Height (outside edge)	1700mm
Height (highest point)	1900mm
Depth	1795mm
Safe Working Load	850kg